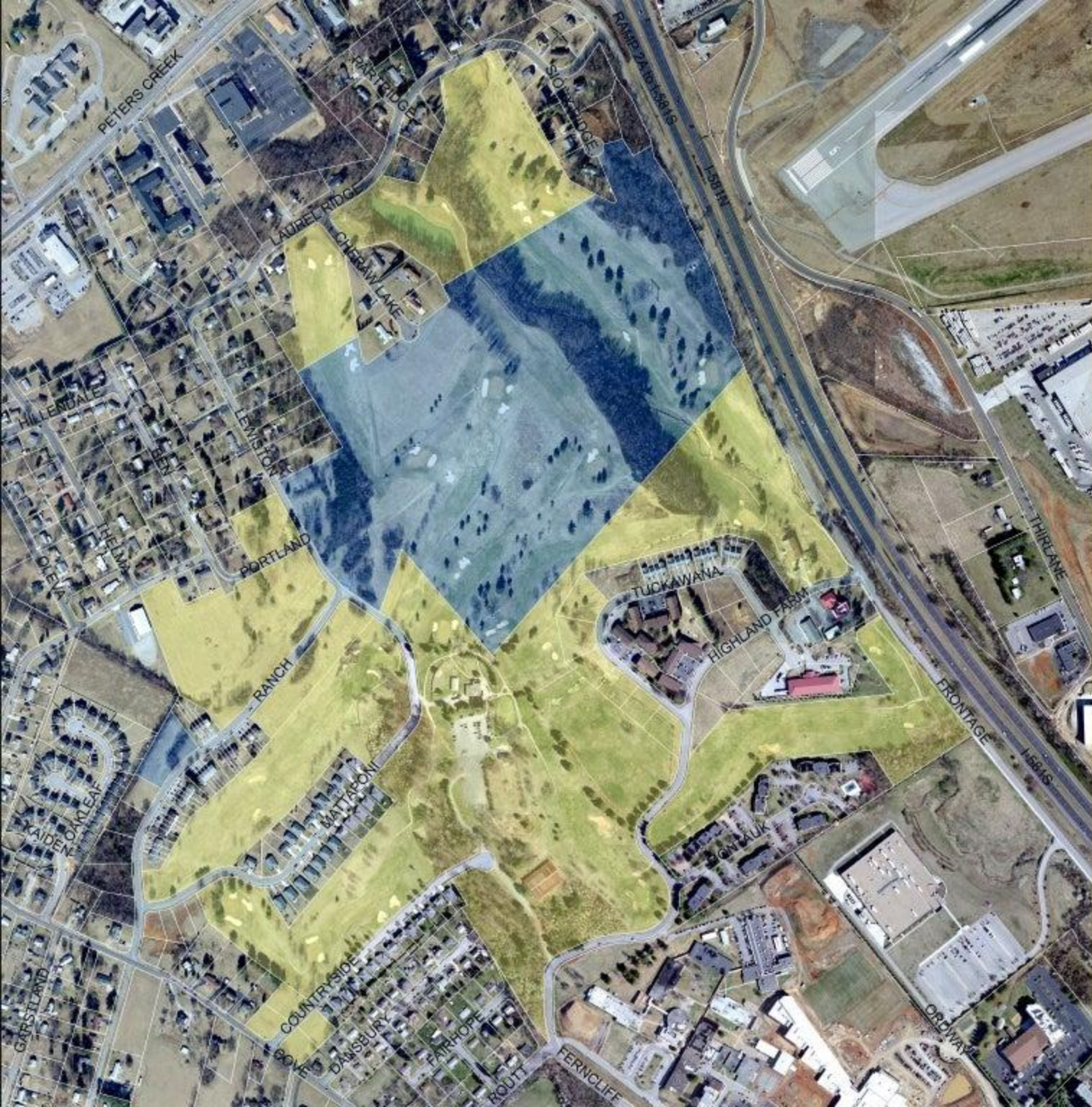


# Countryside Maps

- Overview/aerial photography
- Topography
- Water and Forest Cover
- Land Use
- Zoning
- Street System

Urban Planning  
Prepared By:  
Mysha chodhury  
Jr. Instructor(Architecture)  
Daffodil Instiute of IT,Ctg





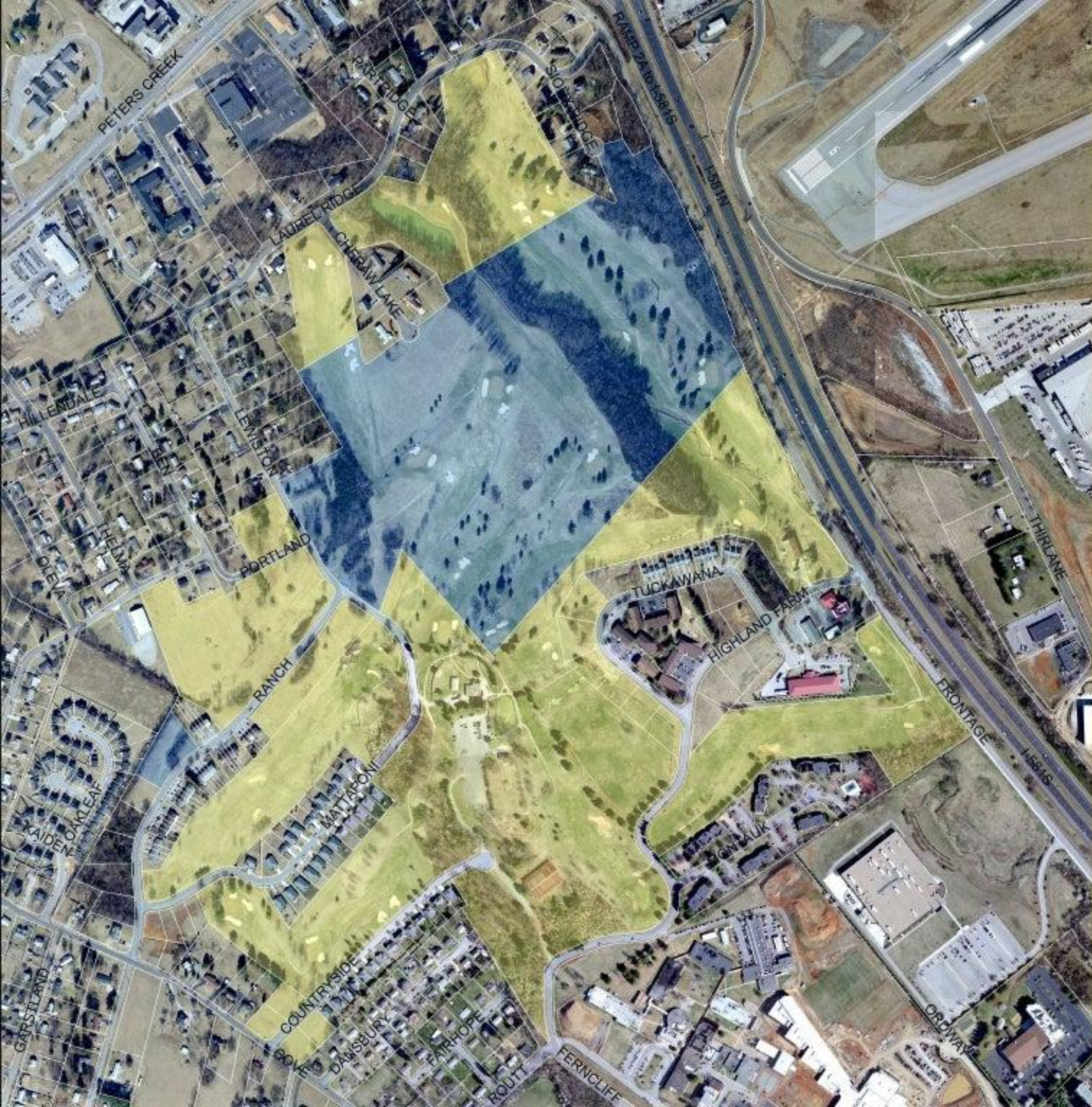
## Overview

This map shows property lines superimposed on an aerial photo. City land holdings are shown in yellow and Airport land holdings in blue.

Development challenges:

- Topography
- Property is fragmented
- Existing land uses
- Flood plain and wetlands
- Airport noise
- Limits on usage of Runway Protection Zone (RPZ)
- Disconnected street system



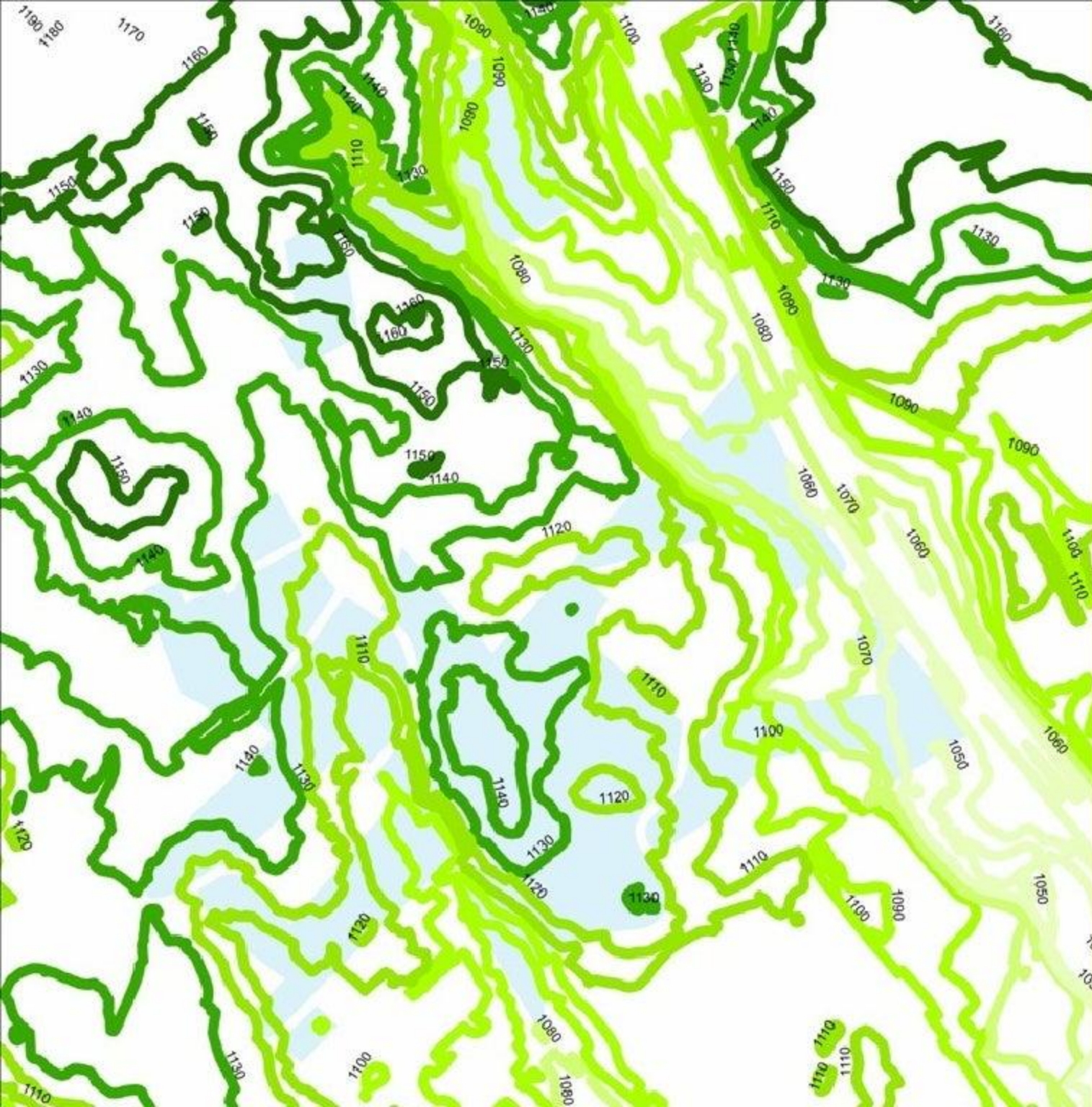


## Overview

### Strengths:

- Most surrounding residential and commercial is strong & well-maintained
- Potential for passive open spaces (i.e., RPZ)
- Future greenway route and potential for linkages
- Potential to highlight water features
- Opportunities to improve transportation access
- Recent investment in the vicinity
- Adjacent to new WFHS complex
- Exceptional viewsheds – elevated above most of city





## Topography

- This map shows higher elevations in dark green and lower elevation in light green
- Three topographic areas
- Elevations range from 1,050' to 1,160' (110' change)
- Steep slope running NW-SE