

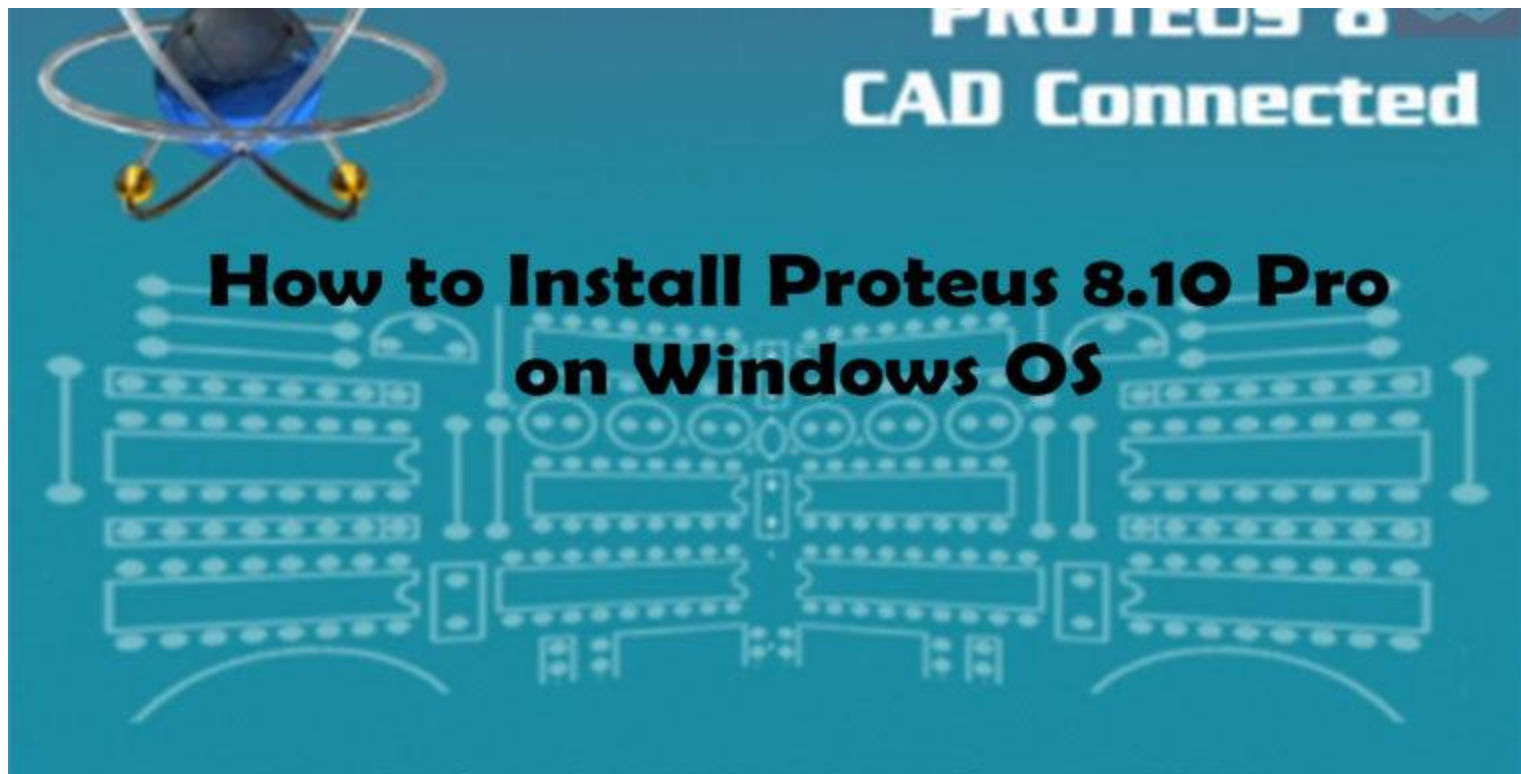
# Chapter-1

Install a PCB design software & identify the commonly used features

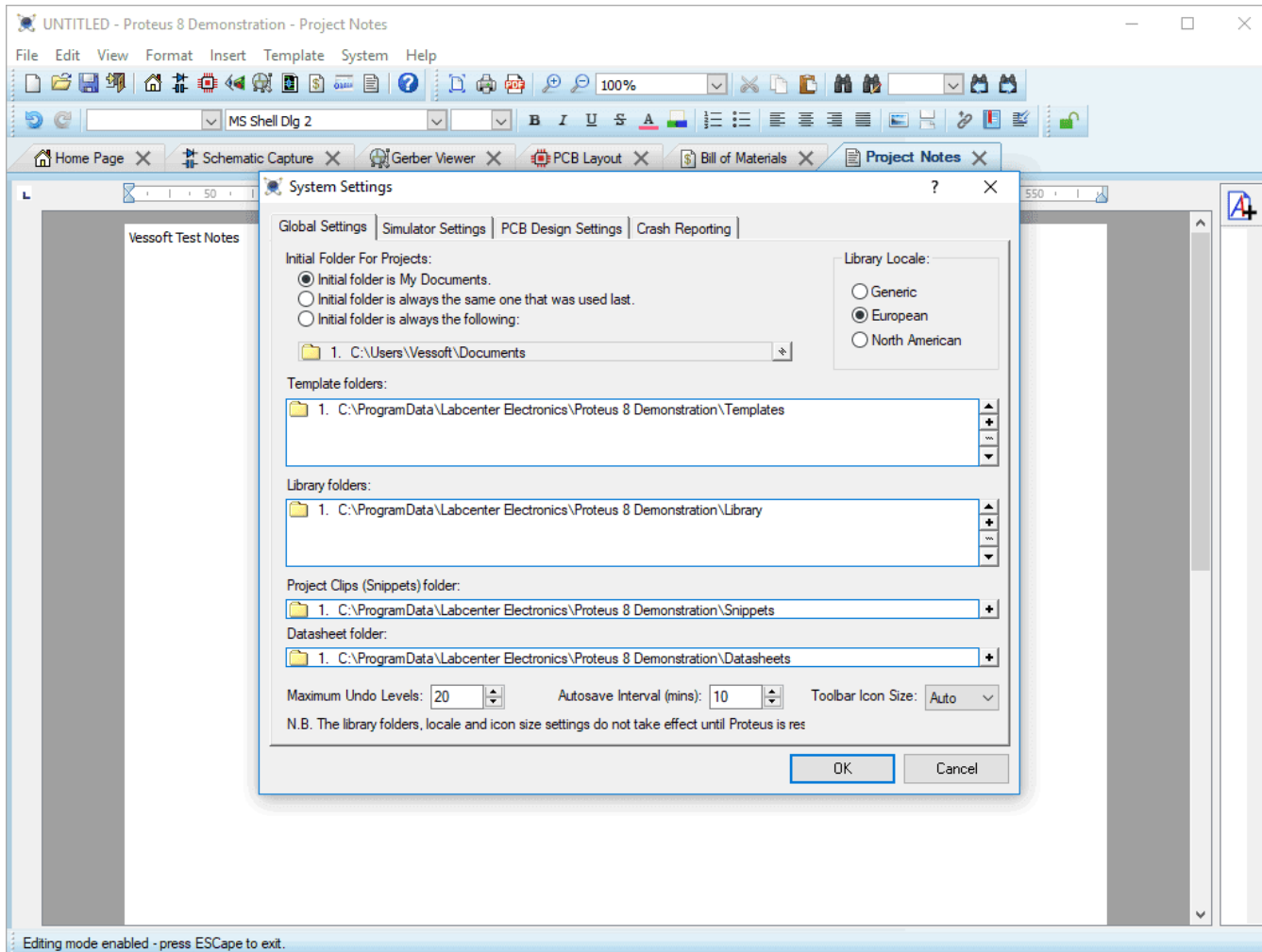
Prepared by

Afifa Hoque

# Install Proteus



# (cont.)



# (cont.)

The screenshot shows a Windows File Explorer window titled "Proteus" with the "Application Tools" ribbon selected. The address bar shows the path to the "Proteus" folder. The left sidebar shows the "Favorites" and "Homegroup" sections. The main pane displays a table of files:

Name	Date modified	Type	Size
LXK Proteus 7.7 SP2 ENG v1.0.0.exe	6/9/2010 8:56 PM	Application	32 KB
pro-setup77.exe	5/23/2010 10:19 A...	Application	70,094 KB
Users of the former USSR_LICENCE.lxk	12/18/2009 9:34 PM	LXK File	10 KB

Overlaid on the bottom right of the File Explorer is a dialog box titled "Proteus Professional - InstallShield Wizard". The dialog box has a "Setup Status" section with the following text:

Proteus Professional is configuring your new software installation.

Completing configuration...

Below the text is a green progress bar. At the bottom right of the dialog box is a "Cancel" button. The text "InstallShield" is visible at the bottom left of the dialog box.

At the bottom left of the File Explorer window, the status bar shows "3 items 1 item selected 68.4 MB".

At the bottom right of the overall image, there is a watermark that reads "Activate Windows Go to PC settings to activate Windows".

# Whole Simulation Process

